

DATEXEL LLC

Using Simply Modbus to read Temperature with Modbus Slave Thermocouple module.

Set up Simply Modbus.

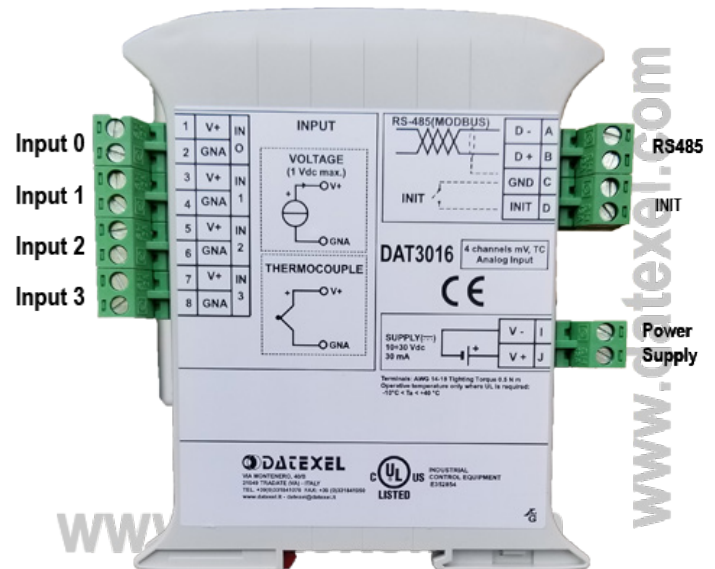
1. Download demo or purchase the RTU Simply Modbus Master from www.simplymodbus.ca.
2. Install and run the Software.



www.datexel.com

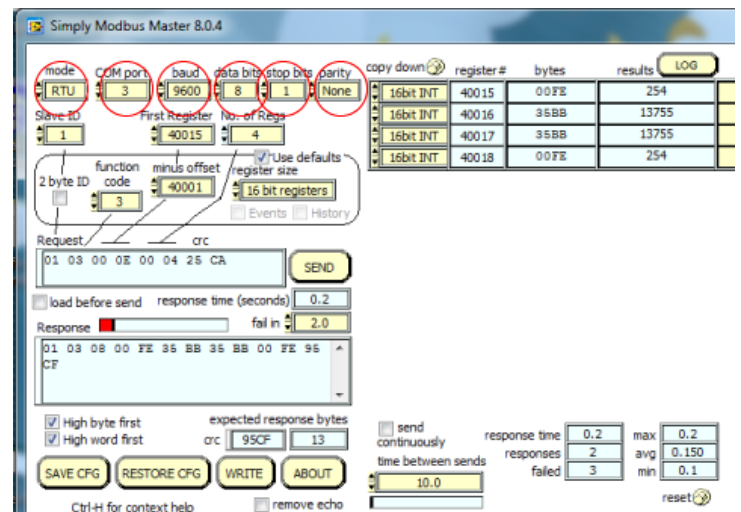
Set up DAT3016.

1. Connect 24 Vdc to Terminal I and J.
2. Connect RS485 from the PC to A (D-) and B (D+)
3. Connect a thermocouple or temperature Calibrator to Channel 0.
4. If you do not know the Thermocouple Modbus Slave connect the short on INIT and recycle the power. This will set all the communication parameters to the following.
 - Baud Rate 9600.
 - Data bits 8.
 - Stop Bits 1.
 - Parity None.



Setting the Communication Port on the Simply Modbus Software.

1. The mode of Communication is RTU.
2. The Com port of the PC is 3. This could be different.
3. The Baud rate is 9600.
4. The Data bits is 8.
5. The Stop bits is 1.
6. The Parity is none.



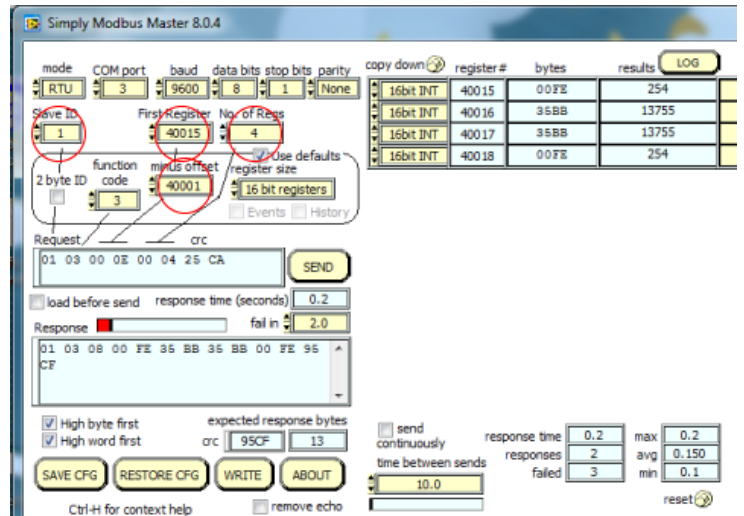
www.datexel.com

Call 561 779 5660 for Technical Support.

Setting the Slave ID and Read Registers.

1. The Slave ID on the DAT3016 is 1.
2. The Register of Channel 0 is 40015.
3. As the DAT3016 is a 4 channel thermocouple Modbus Slave we would like to read all 4 channels, so we type 4 in No. of Regs.
4. The offset is 40001.

More information on the register tables are in the User Guide.



Sending the Command and Receiving the Temperature.

1. Click Send.
2. If all is good the DAT3016 should return the Temperature.
3. The result is a temperature of 254 which equals 25.4°C.

