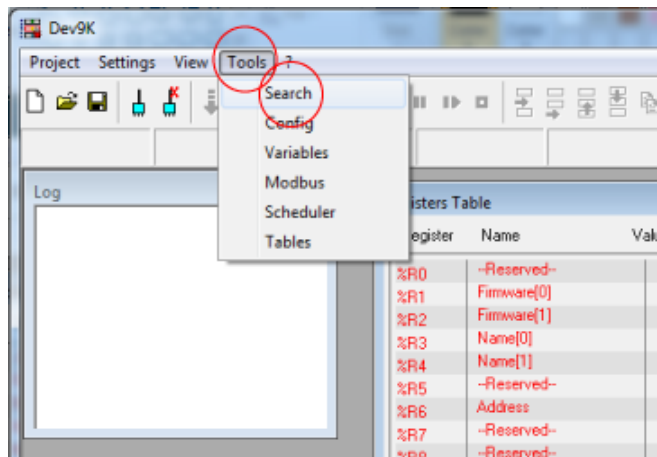


DATATEXEL LLC

How to sync the time on a Modbus Master with Ethernet.

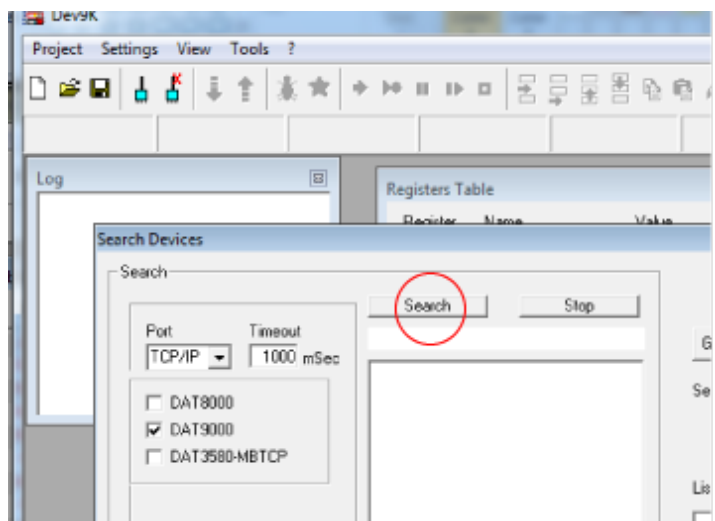
1. Connect Cat 5 crossover cable to the RJ45 connection which is next to the Power Supply on the DAT9000 and the PC.
 2. Download the Dev9K version 1.8 from the Datexel download page.
- Please note the Cat 5 cable must be a crossover cable, unless a router is being used.

1. Click the Tools tab.
2. On the drop down menu click Search.



www.datexel.com

1. The Search Devices box should open.
2. Click the Search label in the Search Devices box marked red.

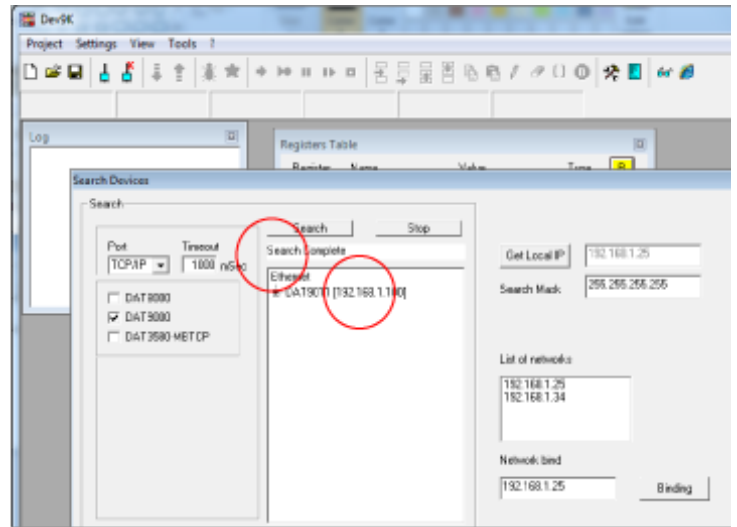


www.datexel.com

www.datexel.com

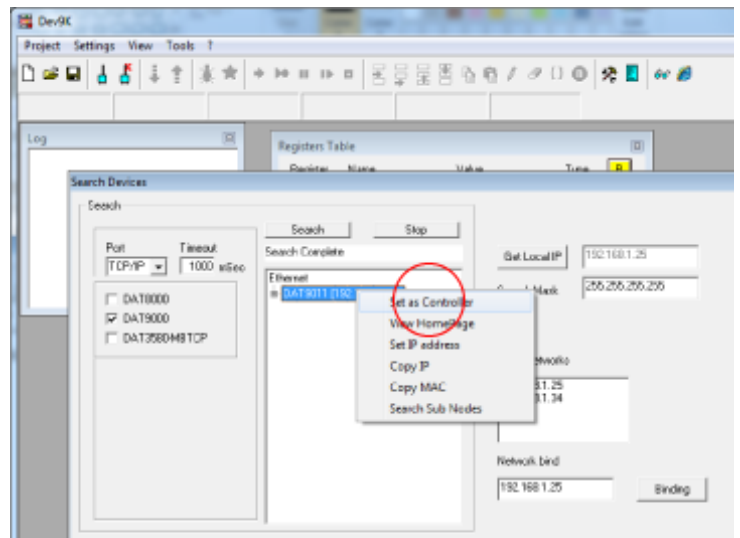
Call 561 779 5660 for Technical Support.

1. In the Search Devices box it should say Search Complete.
2. Below Search Complete, it should say Ethernet, the Device name and the IP address.



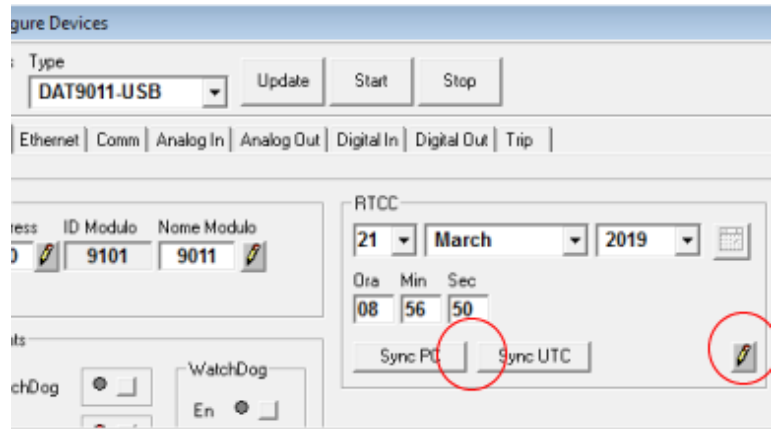
www.datexel.com

1. Right click the Device name and IP address.
2. Click Set as Controller.



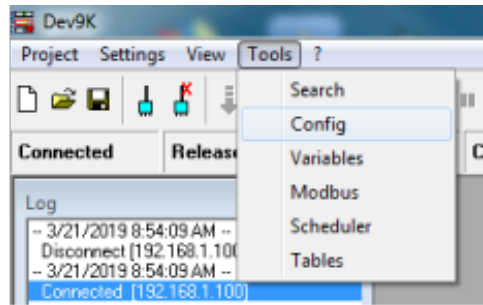
www.datexel.com

1. The Dev 9K software should now show connected and Com OK.
2. Click the yellow R button to see the register table inside the Modbus Controller.
3. You will be able to see the time in register 22,23,24.



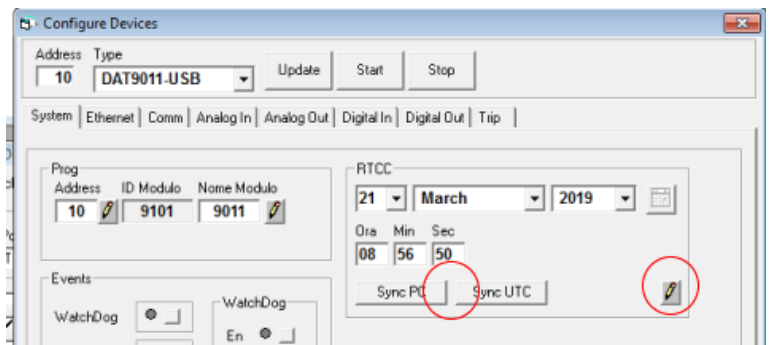
www.datexel.com

1. Click the Tools Label.
2. On the drop down menu select the Config tab.



www.datexel.com

1. When the Configure Device box opens.
2. Click either the Sync PC time or Sync UTC time.
3. Very important Click the pencil to write to the DAT9000.
4. Click the yellow R button to check the time in the register.



www.datexel.com

Possible Communication errors.

- Suspend anti-virus protection as it can sometimes stop communication.
- Check you have used a Cat 5 cable, which is a crossover cable, unless you are using a router.
- The PC may be on a different subnet.
- Check the local IP address and make sure it is on the same network.