

Modbus RS232 Digital Input Output Module

DAT 3188/8

FEATURES

- Modbus Server device on RS-232
- Modbus RTU/ Modbus ASCII protocol
- 8 digital inputs
- 8 digital outputs type PNP
- Watch-Dog alarm
- Four ways galvanic isolation
- CE / UL / UKCA mark
- DIN rail mounting in compliance with EN-50022



GENERAL DESCRIPTION

The device DAT 3188/8 is able to acquire up to 8 digital inputs and to drive up to 8 PNP transistor outputs. The data are transmitted with MODBUS RTU/MODBUS ASCII protocol on the RS-232 network (RS-485 interface is available).

To ensure the plant safety, it is provided a Watch-Dog timer alarm.

The isolation between the parts of circuit removes eventual ground-loop effects, allowing the use of the device even in the heavy environmental conditions.

The device is in compliance with the Directive UL 61010-1 for US market and with the Directive CSA C22.2 No 61010-1 for the Canadian market.

It is housed in a rough self-extinguishing plastic container which, thanks to its thin profile of 17.5mm only, allows a high density mounting on EN-50022 standard DIN rail.

USER INSTRUCTIONS

Before to install the device, please read the "Installation Instruction" section.

If the module configuration is unknown, with device powered off, connect the INIT terminal to the GND terminal (ground), at the next power on the device will be auto-configured in the default settings (refer to the User Guide of the device).

Connect power supply, serial bus, digital inputs and transistor outputs as shown in the "Wiring" section.

The "PWR" LED state depends on the working condition of the device: see the "Light Signalling" section to verify the device working state.

To perform configuration and calibration operations, read the instructions in the User Guide of the device.

To simplify handling or replacing of the device, it is possible to remove the wired terminals even with the device powered.

TECHNICAL SPECIFICATIONS (Typical @ 25 °C and in the nominal conditions)

DIGITAL INPUTS		SERIAL OUTPUT	GENERAL SPECIFICATIONS	
Number of Channels	8	Data Transmission (asynchronous serial RS-485) Baud Rate115.2 Kbps Max. distance1.2 Km – 4000 ft	Power supply voltage	10 .. 30 Vdc
Input voltage (bipolar)	OFF State : 0÷3 V ON State : 10÷30 V		Reverse polarity protection	60 Vdc max
Input Impedance	4.7 KOhm		Max. Current consumption	45 mA
Sample time	5 ms		ISOLATION	
			Between all ways	
			2000 Vac, 50 Hz, 1 min	
			ENVIRONMENTAL CONDITIONS	
			Operative temperature-10°C .. +60°C	
			UL Operative Temperature-10°C .. +40°C	
			Storage temperature-40°C .. +85°C	
		Humidity (not condensing)0 .. 90 %		
		Maximum Altitude2000 m slm		
		InstallationIndoor		
		Category of InstallationII		
		Pollution Degree2		
		MECHANICAL SPECIFICATIONS		
		MaterialSelf-extinguish plastic		
		IP CodeIP20		
		Wiringwires with diameter		
		0.8÷2.1 mm ²		
		AWG 14-18		
		Tightening Torque0.5 N m		
		Mountingin compliance with DIN		
		rail standard EN-50022		
		Weightabout 150 g.		
		CERTIFICATIONS		
		EMC (for the Industrial Environments)		
		ImmunityEN 61000-6-2		
		EmissionEN 61000-6-4		
		UKCA (ref S.I. 2016 N°1091)		
		ImmunityBS EN 61000-6-2		
		EmissionBS EN 61000-6-4		
		UL		
		US StandardUL 61010-1		
		Canadian StandardCSA C22.2 No 61010-1		
		CCNNRAQ/NRAQ7		
		TypologyOpen Type device		
		ClassificationIndustrial Control		
		Equipment		
		File NumberE352854		
		</		

INSTALLATION INSTRUCTIONS

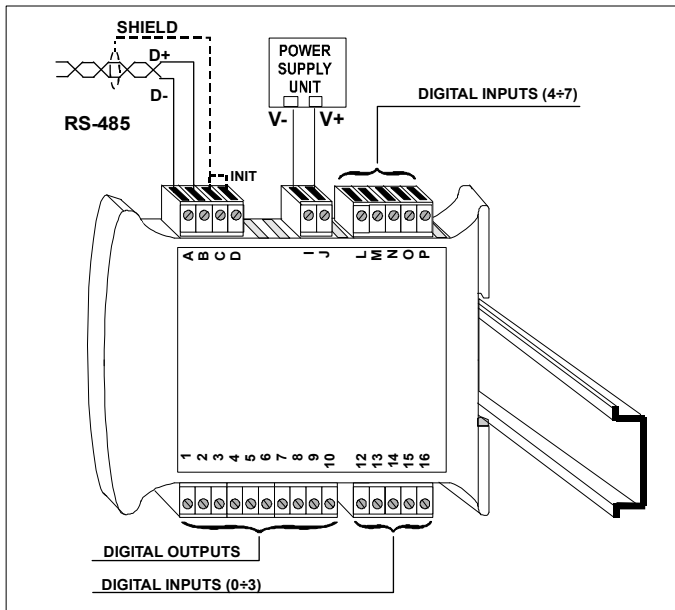
The device is suitable to be mounted on DIN rail, in vertical position. For a correct working and a long life of the device, read the following indications. In case of the devices are mounted side by side, please leave about 5mm between if the temperature in the cabinet higher than 45 °C and high supply voltage (>27Vdc).

Avoid to place raceways or other objects which could obstruct the ventilation slits. It is suggested to avoid that devices are mounted above appliances generating heat; their ideal place should be in the lower part of the panel.

Avoid to install the devices in a site where vibrations are present.

It is recommended to use shielded cable for connecting signals. The shield must be connected to an earth wire provided for this purpose. Moreover it is suggested to avoid routing conductors near power signal cables.

CABLING



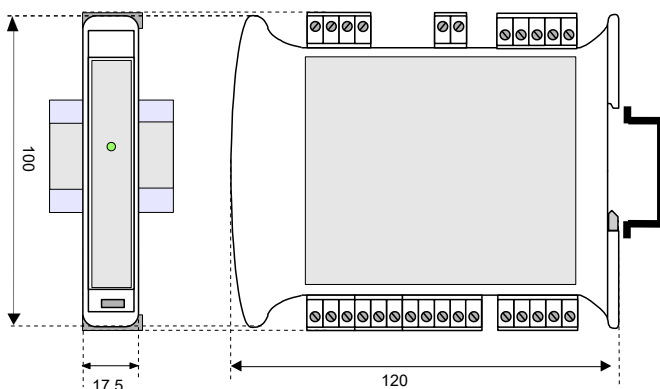
LIGHT SIGNALLING

LED	COLOR	STATE	DESCRIPTION
PWR	GREEN	ON	Device powered
		OFF	Device not powered / Wrong RS-485 cabling.
		FAST BLINKING	Communication in progress (the blinking frequency depends on baud-rate)
		1 second BLINKING	Watch-Dog Alarm condition

ISOLATION STRUCTURE

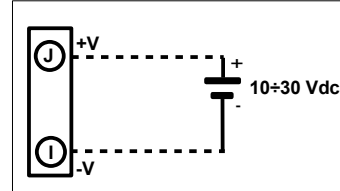


MECHANICAL DIMENSIONS (mm)

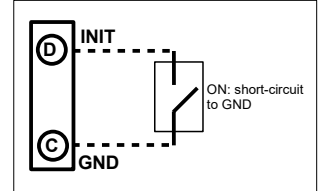


WIRING

POWER SUPPLY (*)

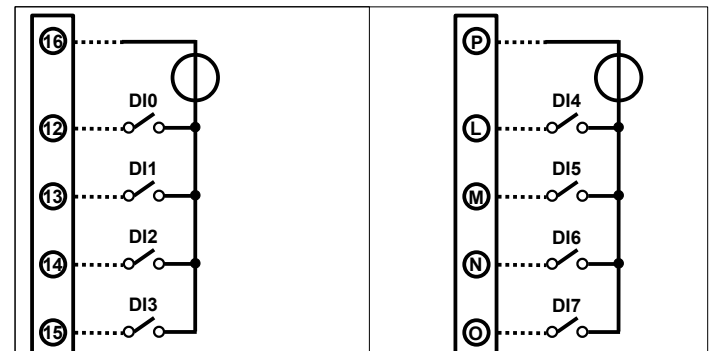


INIT



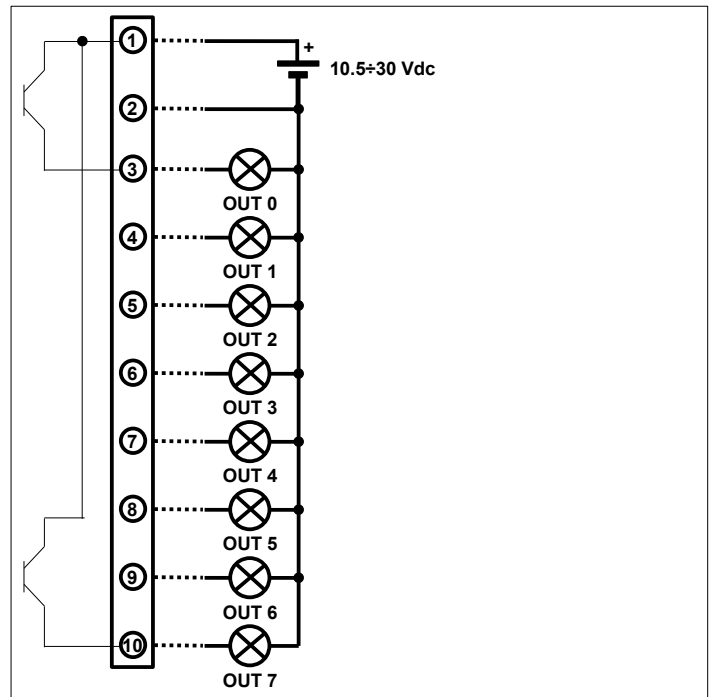
(*) Note: for UL installation the device must be powered using a power supply unit classified NEC class 2 or SELV with limited energy

DIGITAL INPUTS

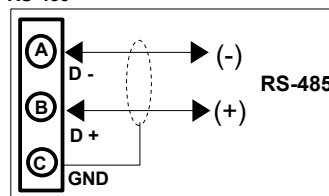


NOTE: Input channels 0÷3 and 4÷7 are not insulated between them

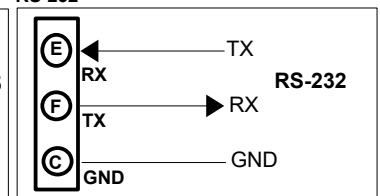
DIGITAL OUTPUTS



RS-485



RS-232



HOW TO ORDER

ORDER CODE:
DAT 3188/8



The symbol reported on the product indicates that the product itself must not be considered as a domestic waste. It must be brought to the authorized recycle plant for the recycling of electrical and electronic waste. For more information contact the proper office in the user's city, the service for the waste treatment or the supplier from which the product has been purchased.