

Volyage to RS232 Converter

DAT 3017-V

FEATURES

- Modbus Server device on RS-232
- Modbus RTU/ Modbus ASCII protocol
- 8 input channels up to ± 10 Volt
- Watch-Dog Alarm
- Remotely Configurable
- 2000 Vac 3-ways Galvanic Isolation
- LED of signalling on front side for power supply and communication
- Connection by removable screw terminals
- High accuracy
- CE / UL / UKCA mark
- DIN rail mounting in compliance with EN-50022



GENERAL DESCRIPTION

The device DAT 3017-V is able to acquire up to 8 analogue input signals. The data are transmitted with MODBUS RTU/MODBUS ASCII protocol on the RS-485 network (RS-232 interface is available). It is possible to connect on input voltage signals up to ± 10 V.

The device guarantees high accuracy and stable measure versus time and temperature.

To ensure the plant safety, it is provided a Watch-Dog timer alarm.

The isolation between the parts of circuit removes eventual ground-loop effects, allowing the use of the device even in the heavy environmental conditions.

The device is in compliance with the Directive UL 61010-1 for US market and with the Directive CSA C22.2 No 61010-1 for the Canadian market.

It is housed in a rough self-extinguishing plastic container which, thanks to its thin profile of 17.5mm only, allows a high density mounting on EN-50022 standard DIN rail.

USER INSTRUCTIONS

Before to install the device, please read the "Installation Instruction" section.

If the module configuration is unknown, with device powered off, connect the INIT terminal to the GND terminal (ground), at the next power on the device will be auto-configured in the default settings (refer to the User Guide of the device).

Connect power supply, serial bus and analogue inputs as shown in the "Wiring" section.

The "PWR" LED state depends on the working condition of the device: see the "Light Signalling" section to verify the device working state.

To perform configuration and calibration operations, read the instructions in the User Guide of the device.

To simplify handling or replacing of the device, it is possible to remove the wired terminals even with the device powered.

TECHNICAL SPECIFICATIONS (Typical @ 25 °C and in the nominal conditions)

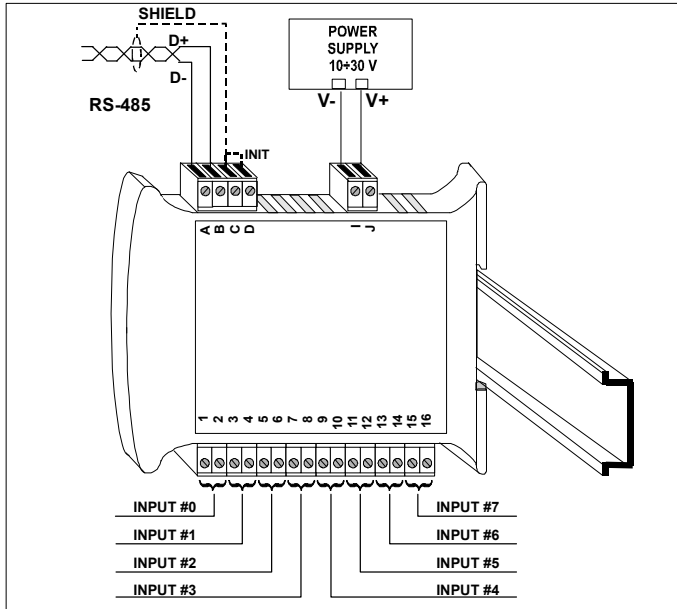
INPUT			SERIAL OUTPUT	GENERAL SPECIFICATIONS	
Input Type	Min	Max	Data Transmission	Power supply voltage	10 .. 30 Vdc
Voltage			RS-485 asynchronous serial Baud Rate 38.4 Kbps Max. distance 1.2 Km – 4000 ft	Reverse polarity protection	60 Vdc max
10 V	-10 V	+10 V		Max. Current consumption	30 mA
Input Accuracy (1)				ISOLATION	
Voltage	± 10 mV			Among all the ways	2000 Vac, 50 Hz, 1 min
Linearity (1)				ENVIRONMENTAL CONDITIONS	
Voltage	± 0.1 % f.s.			Operative temperature	-10°C .. +60°C
Input Impedance				UL Operative Temperature	-10°C .. +40°C
Voltage	≥ 1 M Ω			Storage temperature	-40°C .. +85°C
Thermal drift (1)				Humidity (not condensing)	0 .. 90 %
Full scale	± 0.005 % / °C			Maximum Altitude	2000 m slm
Sample time	0.5 \div 1 sec.			Installation	Indoor
				Category of Installation	II
				Pollution Degree	2
				MECHANICAL SPECIFICATIONS	
				Material	Self-extinguish plastic
				IP Code	IP20
				Wiring	wires with diameter 0.8 \pm 2.1 mm ² AWG 14-18
				Tightening Torque	0.5 N m
				Mounting	in compliance with DIN rail standard EN-50022
				Weight	about 150 g.
				CERTIFICATIONS	
				EMC (for the Industrial Environments)	
				Immunity	EN 61000-6-2
				Emission	EN 61000-6-4
				UKCA (ref S.I. 2016 N°1091)	
				Immunity	BS EN 61000-6-2
				Emission	BS EN 61000-6-4
				UL	
				US Standard	UL 61010-1
				Canadian Standard	CSA C22.2 No 61010-1
				CCN	NRAQ/NRAQ7
				Typology	Open Type device
				Classification	Industrial Control Equipment
				File Number	E352854

(1) Referred to input Span (difference between max. and min. values)

INSTALLATION INSTRUCTIONS

The device is suitable for fitting to DIN rails in the vertical position. For optimum operation and long life follow these instructions: When the devices are installed side by side it may be necessary to separate them by at least 5 mm if panel temperature exceeds 45°C and at least one of the overload conditions exist. Make sure that sufficient air flow is provided for the device avoiding to place raceways or other objects which could obstruct the ventilation slits. Moreover it is suggested to avoid that devices are mounted above appliances generating heat; their ideal place should be in the lower part of the panel. Install the device in a place without vibrations. Moreover it is suggested to avoid routing conductors near power signal cables (motors, induction ovens, inverters etc...) and to use shielded cable for connecting signals.

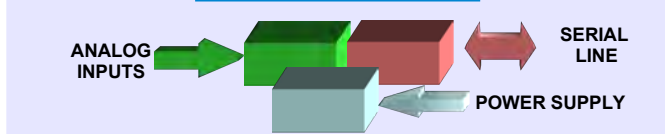
CABLING



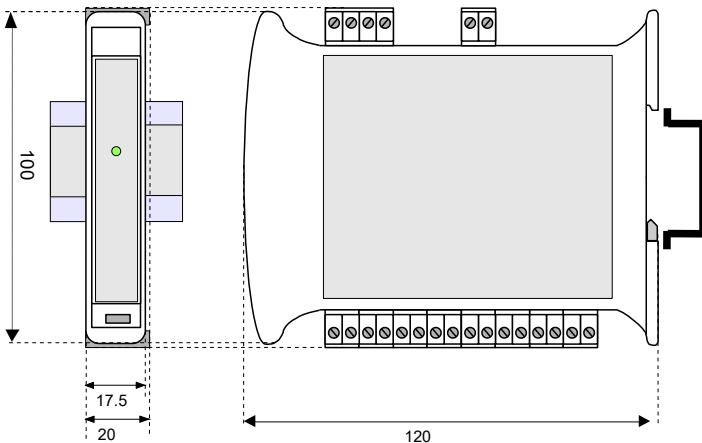
LIGHT SIGNALLING

LED	COLOR	STATE	DESCRIPTION
PWR	GREEN	ON	Device powered
		OFF	Device not powered / Wrong RS-485 cabling.
		FAST BLINKING	Communication in progress (the blinking frequency depends to baud-rate)
		1 second BLINKING	Watch-Dog Alarm condition

ISOLATION STRUCTURE



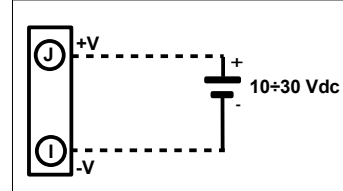
MECHANICAL DIMENSIONS (mm)



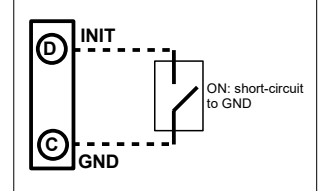
The symbol reported on the product indicates that the product itself must not be considered as a domestic waste. It must be brought to the authorized recycle plant for the recycling of electrical and electronic waste. For more information contact the proper office in the user's city, the service for the waste treatment or the supplier from which the product has been purchased.

WIRING

POWER SUPPLY (*)

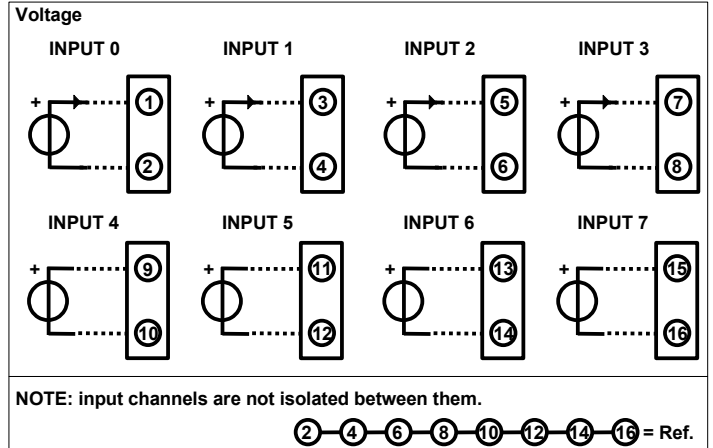


INIT

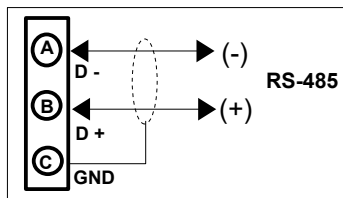


(*) Note: for UL installation the device must be powered using a power supply unit classified NEC class 2 or SELV with limited energy

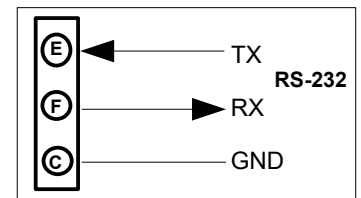
ANALOG INPUTS



RS-485



RS-232



HOW TO ORDER

In the order, it is necessary to specify the interface type (RS485 or RS232). The device can be supplied with the configuration specified by the customer.

ORDER CODE:

DAT 3017-V / 232

Interface type
485 : RS-485
232 : RS-232

■ = Requested
□ = Optional